

The logo for NARBO (Network of Asian River Basin Organizations) features the word "NARBO" in a bold, blue, sans-serif font with a white outline. The letters are set against a background of stylized, overlapping blue and white lines that suggest a globe or a network of connections.

Network of Asian River Basin Organizations



# Integrated Water Resources Management Nam Xong Sub- River Basin, Lao PDR

By:

**Ms. Daophaphone BOUNPHAKHOM**

**Mr. Tha KHPNMIXAY**

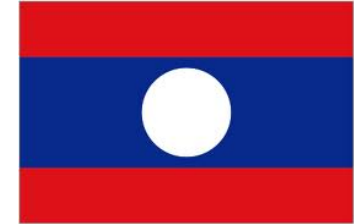
**Department of Water Resources,  
Ministry of Natural Resources and Environment**

**8 November 2013, Sri Lanka**

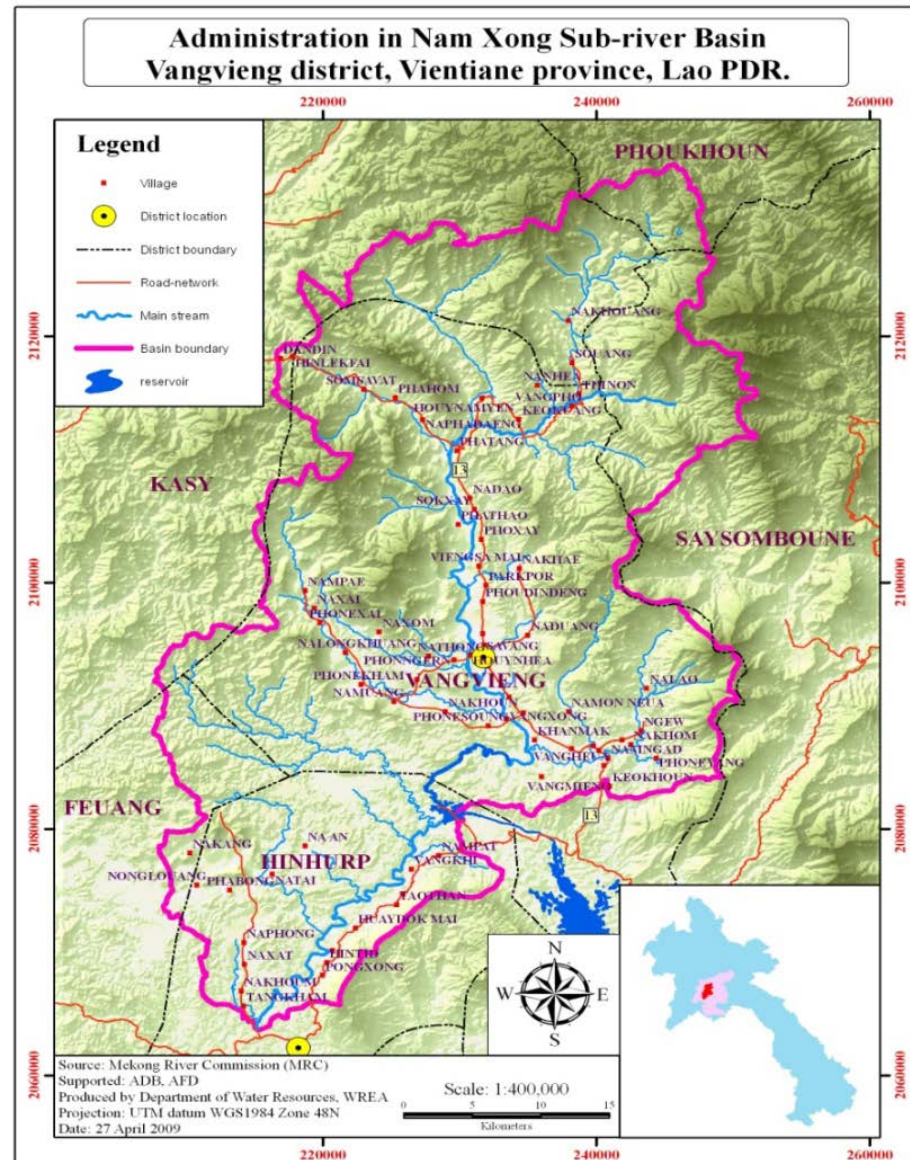


# Overview-

## Nam Xong Sub-River Basin

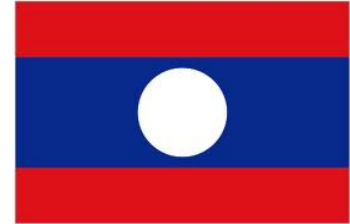


- **Nam Xong Sub-River Basin (NXSRB) is one of the 18 sub-basins of Nam Ngum River Basin (NNRB)**
- **Covers an area of 180,434 ha**
- **Located in the central part of northern Lao PDR 70% of area is in Vangvieng district;**
- **Cover 77 Villages with 64,000 Populations;**





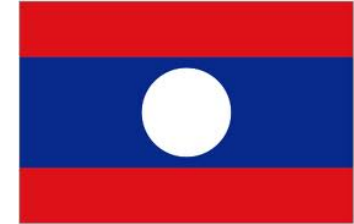
# The Current Issues



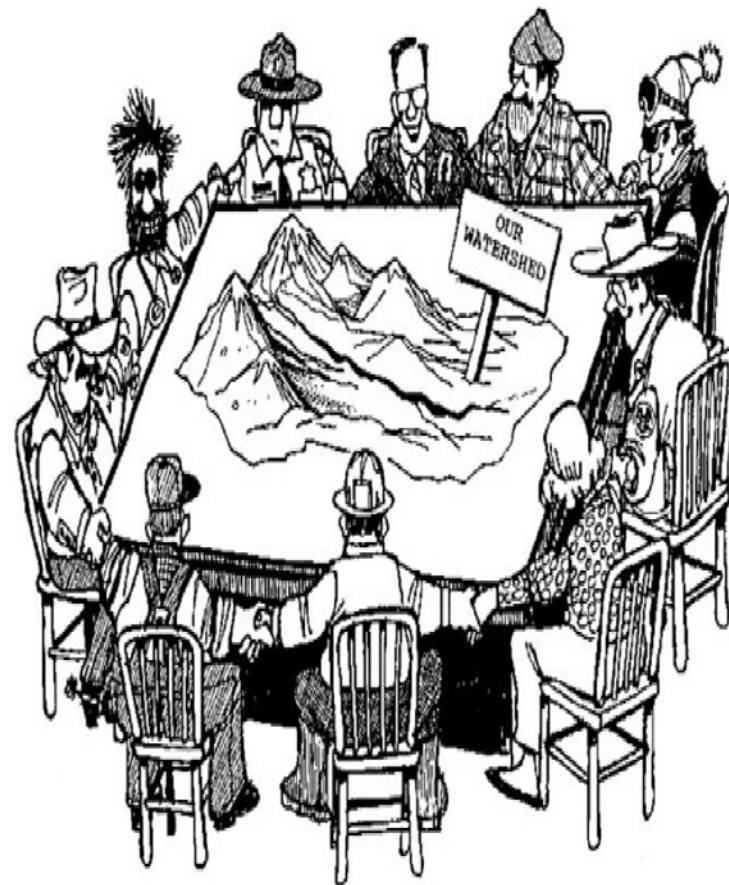
- ***water quality degradation***
- ***reduction of forest area; & decrease of river flow.***
- ***Water uses from activities of water users***
- ***Local authorities and community representatives in NXSRB are less knowledge and capacity building on IWRM***
- ***Less dissemination of practical water protection regulation and technical solutions for water users***



# The priorities Issues

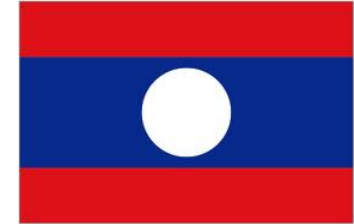


- ***Local authorities and community representatives in NXSRB are less knowledge and capacity building on IWRM***
- ***Less dissemination of practical water protection regulation and technical solutions for water users***

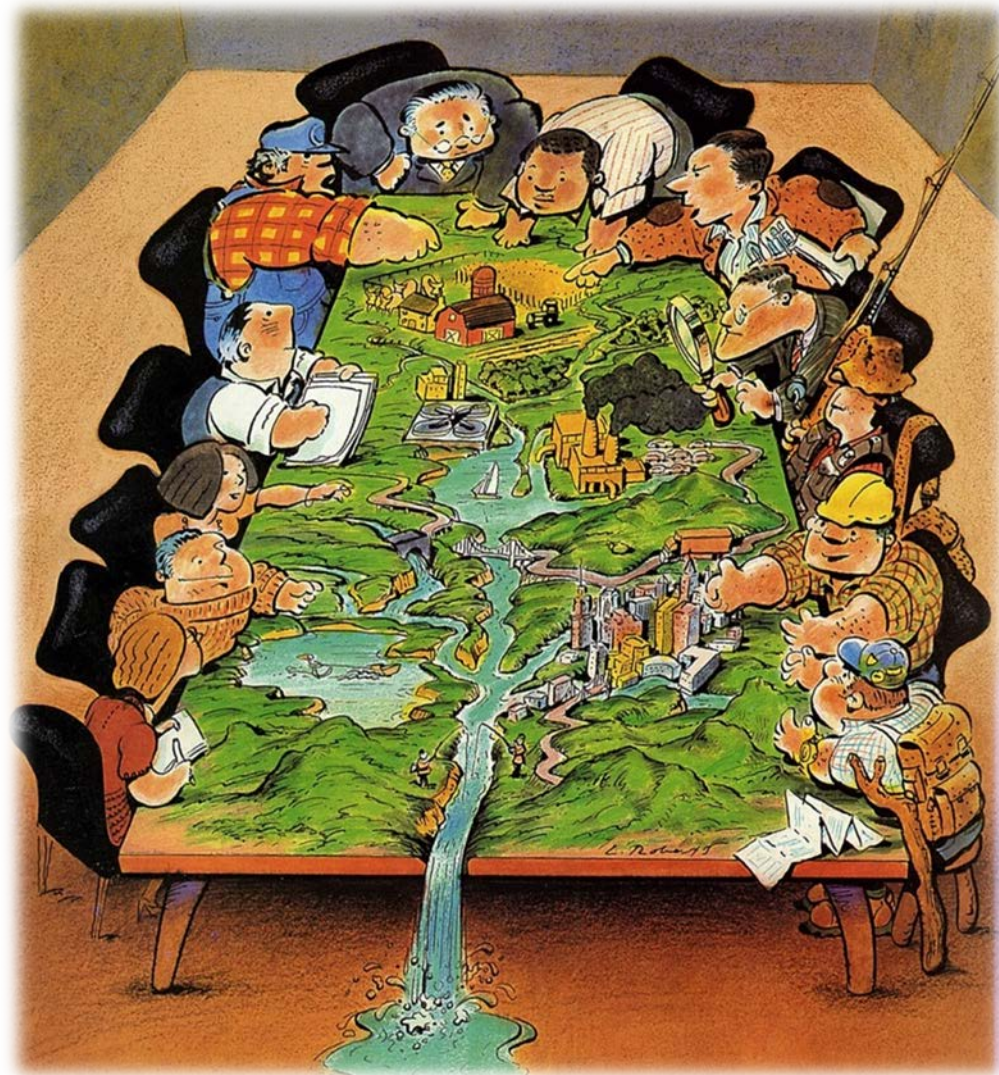




# Target Groups, Stakeholders and Intermediaries Involved

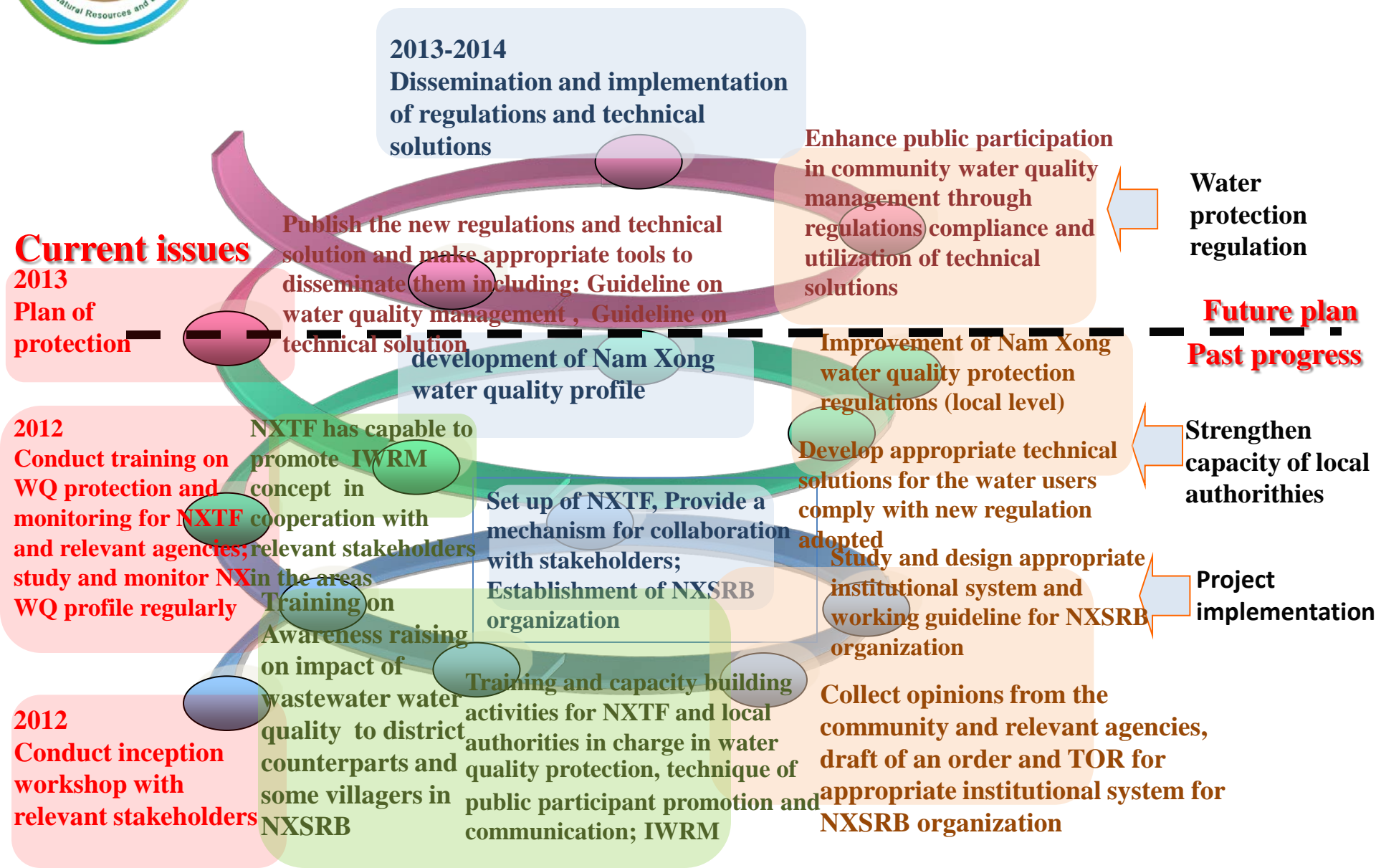
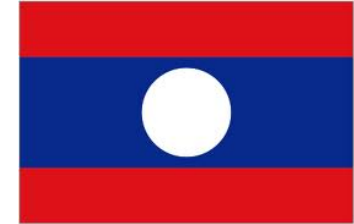


- *NRE Office in district is the key focal point in coordinating with actively well-coordinated with all parties*
- **Several consultations with related *line government agencies* (MONRE, MAF, MEM, MPI, MOH, MPWT, etc...), *private sectors/ developers, development organizations, community-based communication at the local level* (village/village clusters, farmers, fishermen, tourism operators, households which established the environmental counterparts) to develop regulations for NX river management in the basin have been mobilized and reflected all the stakeholders & communities' perspective and sharing & then disseminated.**





# IWRM Spiral Progress in NXSRB



# Khop chai Thank You

Contact: [melody\\_bpk@hotmail.com](mailto:melody_bpk@hotmail.com)

[Tha\\_kmx2@hotmail.com](mailto:Tha_kmx2@hotmail.com)

Office Contact:

[www.dwr.monre.gov.la](http://www.dwr.monre.gov.la)

Tel: +856-21 241 744; Fax: +856-21 218 737